

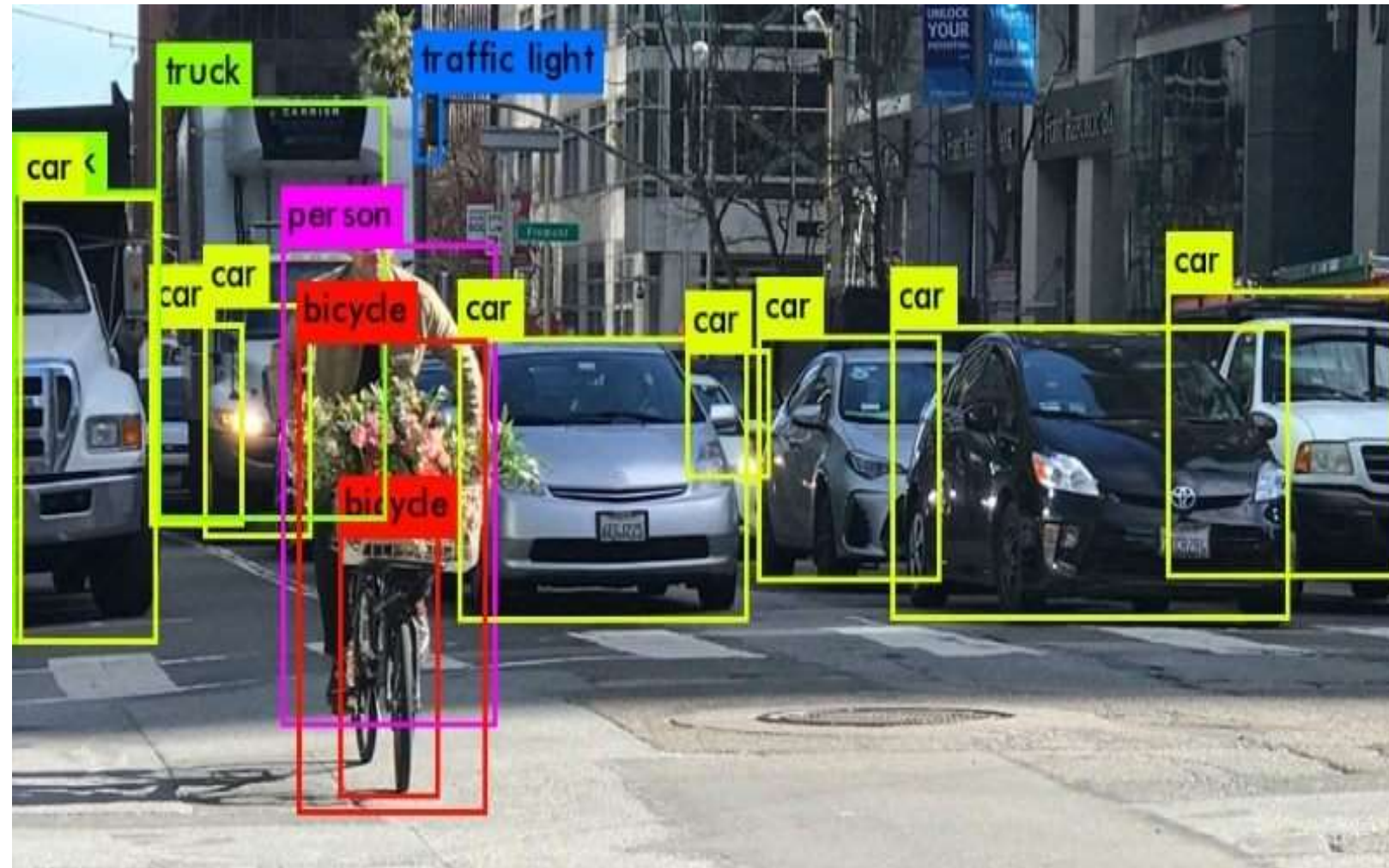


DataPatchWork

LET'S LABEL

Labeling platform and services for African-context Data

What is Data labeling ?



An important step in AI projects of pre-processing data, allowing to add information and provide a context to the raw data.

This task should be done manually on a big quantity of data.

We can label photos, text data, audio sequences, videos.... etc

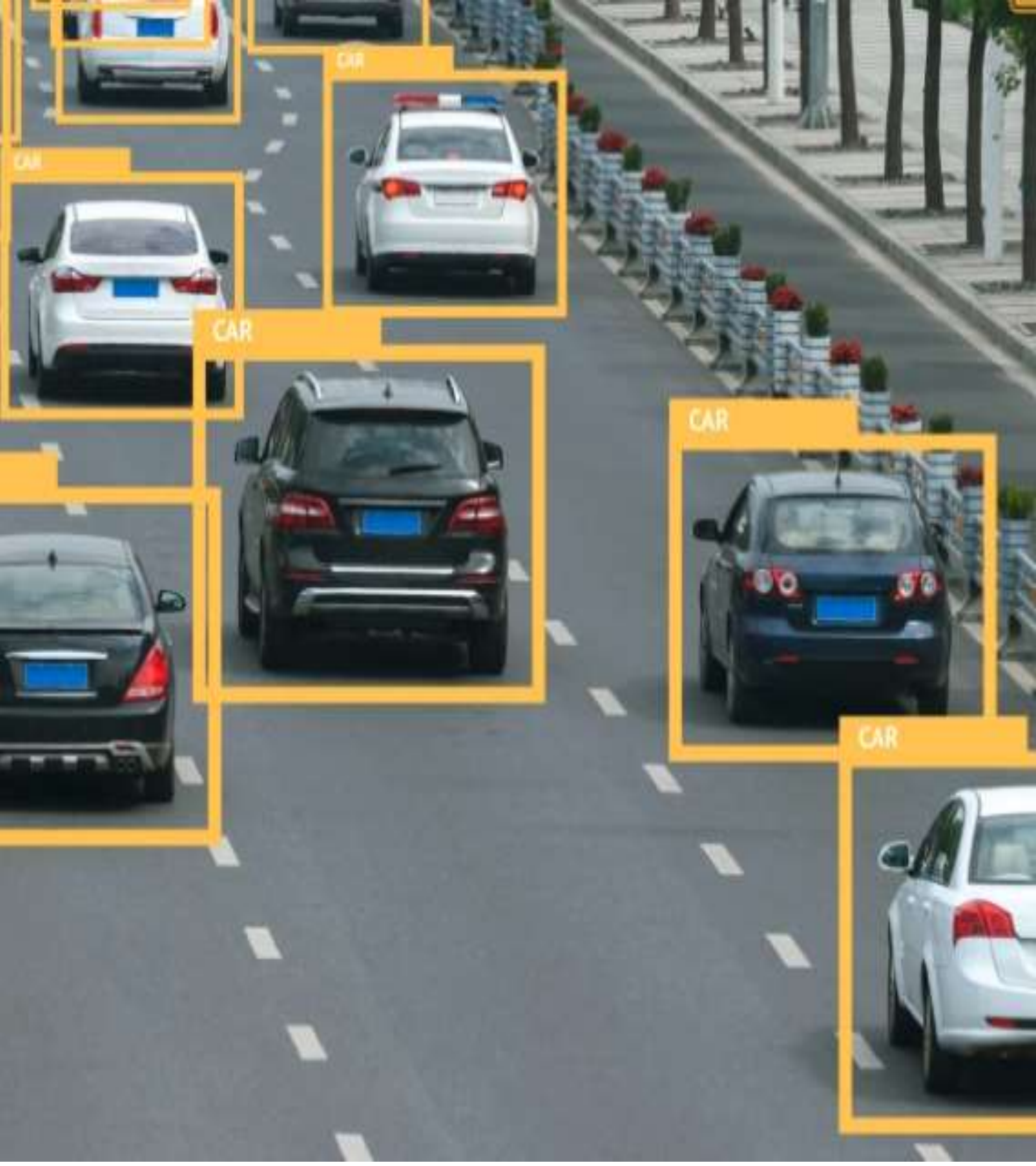
GLOBAL DATA LABELING COMPAGNIES

The global data collection and labeling market size was valued at **USD 1,307.7** million in 2020.

COMPAGNY	COUNTRY	MARKET
SamaSource (2008)	India - Kenya	Worldwide-anglophone
Labelbox (2018), ScaleAI (2019), Hive (2013), CloudFactory(2010).	India, Romania, Philippines..	USA-Wordwide-anglophone

100's Millions dollars raised as investments in data lebeling startup in 2019, 2020.

However : A big part of this activity should be **LOCAL** on **LOCAL** data (languages, dialects, culture, ...).



DATA PATCHWORK

- An african data labeling company with a **social entrepreneurship** business model, making **local people** in rural locations work on **digital jobs**.

Our engagement :

- Strict quality control processes within the platform.
- Cost efficient solution.



Saad Benjelloun
Chief Executive Officer

Expert in Data Science for business applications



Selwa Elfirdoussi
Chief Technology Officer

Computer Science and Information System Expert

Our team



Ikram Chairi
Chief Data Officer- Public Relations

Machine Learning and Data Science expert



Ismail Benali
Chief Operations Officer

Marketing and business expert

Pricing strategy

**Pricing depend on the type of the task : Images, videos,
record**

Price / unit:

- 40Cts of Dhs for more than 10000 unit
- 60Cts of Dhs for less than 9500 unit

For more complexed services including data collection:
tailor-made pricing

THANK YOU

